

Anno Domini 2026

Anno Domini 2017 Professional - Bradford, England

Event Editor PIM Mini RSS Planets Weather Sun Moon Options Nature Help About
Calendar Moon Phases Events Astronomy On This Day Location Sundial Clocks Convert Reports

Sun 112.1° ESE 100% 35.8° Up
Week: 18, Days Gone: 128, Days Left: 238, Star Sign: Taurus
GPS: [53°43' N, 1°45' W], TZ: +00.00, DST: 27 Mar-30 Oct
Sunrise: 5:19 am, Transit: 1:04 pm (15h 30m), Sunset: 8:49 pm
Moon 104.7° ESE 0.68% 28.3° Up

The sun is at Transit in 3 hrs 31 mins time (1:04 pm)

Mo Tu We Th Fr Sa Su
25 26 27 28 29 30 1
2 3 4 5 6 7 8 17
9 10 11 12 13 14 15 19
16 17 18 19 20 21 22 20
23 24 25 26 27 28 29 21
30 31 1 2 3 4 5 22

Rise: 6:13 am, Transit: 1:50 pm, Set: 9:39 pm

June 2016 July 2016
Mo Tu W Th Fr Sa Su Mo Tu W Th Fr Sa Su
30 31 1 2 3 4 5 22 27 28 29 30 1 2 3 26
6 7 8 9 10 11 12 23 4 5 6 7 8 9 10 27
13 14 15 16 17 18 19 24 11 12 13 14 15 16 17 28
20 21 22 23 24 25 26 25 18 19 20 21 22 23 24 30
27 28 29 30 1 2 3 26 25 26 27 28 29 30 31 30
4 5 6 7 8 9 10 27 1 2 3 4 5 6 7 31

Event - N/A; Saint: John of Beverley
Next event in 8 days >> Whit Sunday: Sun, 15 May, 2016
"I have never understood the female capacity to avoid a direct answer to any question."
Annular Solar Eclipse: Thursday, 1 September 2016 at 10:08 am (117 days)

View monthly calendars from AD 1752, current date, time, days gone and days left. Also view times of sunrise/sunset and moonrise/moonset for your location and selected date. Also, statistics between any two dates can be displayed, e.g. number of working days, weekend, days of the week etc. For each calendar month view a scene from nature. View the illuminated portion of the moon and additional calendar views and edit your diary entries all from the same view!

Selected Date: 7 May 2016

Event Editor PIM Mini RSS Planets Weather Sun Moon Options Nature Help About
Calendar Moon Phases Events Astronomy On This Day Location Sundial Clocks Convert Reports

Saturday, 7 May 2016 at 9:35 am
Week: 18, Days Gone: 128, Days Left: 238; Star Sign: Taurus
Scheme: Great Britain

Year: 2016

New Year Holiday (End/Wal/NL): Fri, 01 Jan
New Year's Day: Fri, 01 Jan
New Year's Day Holiday (Sco): Fri, 01 Jan
New Year Holiday (Sco): Mon, 04 Jan
Epiphany: Wed, 06 Jan
Chinese New Year (Monkey): Mon, 08 Feb
Shrove Tuesday: Tue, 09 Feb
Ash Wednesday: Wed, 10 Feb
Valentine's Day: Sun, 14 Feb
St. David's Day: Tue, 01 Mar
Mother's Day (UK): Sun, 06 Mar
US DST Begins (02:00 US): Sun, 13 Mar
St. Patrick's Day (Eire): Thu, 17 Mar
Palm Sunday: Sun, 20 Mar
Spring Begins (4:30): Sun, 20 Mar
Good Friday: Fri, 25 Mar
BST Begins: Sun, 27 Mar
Easter Sunday: Sun, 27 Mar
Easter Monday: Mon, 28 Mar
April Fool's Day: Fri, 01 Apr
St. George's Day: Sat, 23 Apr
May Day Bank Holiday (Eng): Mon, 02 May
Ascension Day: Thu, 05 May
Whit Sunday: Sun, 15 May
Trinity Sunday: Sun, 22 May

Corpus Christi: Thu, 26 May
Spring Bank Holiday (Eng): Mon, 30 May
Father's Day (UK): Sun, 19 Jun
Summer Begins (23:34): Mon, 20 Jun
Armed Forces Day (UK): Sat, 25 Jun
Orangeade's Day (NI): Tue, 12 Jul
August Holiday (Sco): Mon, 01 Aug
August Bank Holiday (Eng): Mon, 29 Aug
Autumn Begins (15:21): Tue, 22 Sep
BST Ends: Sun, 30 Oct
Halloween: Mon, 31 Oct
October Holiday (Eire): Mon, 31 Oct
Guy Fawke's Night (UK): Sat, 05 Nov
US DST Ends (02:00 US): Sun, 06 Nov
Remembrance Sunday (UK): Sun, 13 Nov
Black Friday (US): Fri, 25 Nov
Cyber Monday (US): Mon, 28 Nov
St. Andrew's Day (Sco): Wed, 30 Nov
Winter Begins (10:44): Wed, 21 Dec
Christmas Eve: Sat, 24 Dec
Christmas Day: Sun, 25 Dec
Boxing Day: Mon, 26 Dec
Boxing Day Holiday (UK): Mon, 26 Dec
Christmas Day Holiday (UK): Tue, 27 Dec
New Year's Eve: Sat, 31 Dec

Next event in 8 days >> Whit Sunday: Sun, 15 May, 2016

View 50 events/anniversaries at a time which can all be fully edited. Anno Domini comes with many events already predefined such as Easter Sunday, Advent Sunday, public holidays for the UK, USA, Canada, Australia, New Zealand and Europe along with many religious festivals.

Anno Domini 2017 Professional - New York, USA

Event Editor PIM Mini RSS Planets Weather Sun Moon Options Nature Help About
Calendar Moon Phases Events Astronomy On This Day Location Sundial Clocks Convert Reports

Saturday, 7 May 2016 at 9:37 am
New York, USA [40°45' N, 74°00' W], TZ: -05.00, DST: 13 Mar-6 Nov
Sunrise: 5:47 am, Transit: 12:53 pm (14h 12m), Sunset: 7:59 pm
Azimuth at rise: 66.5° ENE, Azimuth at set: 293.7° WNW
Twilight Start: 5:17 am, Civil Twilight: (0h 30m), Twilight End: 8:29 pm
Sun's Altitude at Transit: 66.3° (180.0°), Time Eq: 3 mins 28 secs

Next Perihelion: Wed, 4 January 2017 at 9:19 am, Distance: 91,409,870.13 miles (242 days)
Next Aphelion: Mon, 4 July 2016 at 12:26 pm, Distance: 94,518,622.76 miles (58 days)
Next Equinox/Solstice: 20 June 2016 at 6:34 pm - Summer Solstice (44 days)

Julian Date: 2457515.901157

Sun's Azimuth: 105.596° ESE, Sun's Altitude: 42.616° (Up)
Moon's Azimuth: 97.460° E, Moon's Altitude: 31.872° (Up)
Sun's Distance to Earth: 93,818,024.84 miles, Moon's Distance to Earth: 223,244.17 miles
Moon's Illuminated Fraction: 0.695%, Moon's Angle Of Tilt: -65.750°
Age of Moon: 0 days 19 hours 7 mins

Moonrise: 6:42 am, Transit: 1:51 pm, Moonset: 9:06 pm
Azimuth at rise: 70.47° ENE, Azimuth at set: 291.65° WNW
Moon's Altitude at Transit: 64.86° (180.19° S)
Last Phase: New Moon, Fri 6 May 2016 at 8:30 pm (-1 day)

Next Perigee: Fri, 3 June 2016 at 6:54 am, Distance: 224,425.01 miles (27 days)
Next Apogee: Wed, 18 May 2016 at 6:07 pm, Distance: 252,238.05 miles (11 days)
Closest Perigee: Mon, 14 Nov 2015 at 06:23 am, Distance: 221,564.06 miles (191 days)

Annular Solar Eclipse: Thursday, 1 September 2016 at 5:08 am (117 days)
Penumbral Lunar Eclipse: Friday, 16 September 2016 at 2:56 pm (132 days)

Next Phase: First Quarter, Fri 13 May 2016 at 6:02 pm (6 days)

View detailed astronomical data regarding the position of the Sun and the Moon which is constantly updated every minute. Keep track of the exact position of the Sun and Moon, when they rise and set, their illumination, tilt, visibility etc.

New York, USA - DST Start: Sun 13 Mar 02:00 - DST End: Sun 6 Nov 02:00

Event Editor PIM Mini RSS Planets Weather Sun Moon Options Nature Help About
Calendar Moon Phases Events Astronomy On This Day Location Sundial Clocks Convert Reports

Barcelona, Spain
41°21' N, 2°10' E
TZ: +01.00, 3339 miles
+6 hrs 0 mins
Sat 7 May, 3:39 pm

Bradford, England
53°48' N, 1°45' W
TZ: +00.00, 3356 miles
+5 hrs 0 mins
Sat 7 May, 2:39 pm

Castellnuovo G. Italy
44°08' N, 10°24' E
TZ: +01.00, 4121 miles
+6 hrs 0 mins
Sat 7 May, 3:39 pm

Florence Italy
43°46' N, 11°15' E
TZ: +01.00, 4169 miles
+6 hrs 0 mins
Sat 7 May, 3:39 pm

Modena, Italy
44°40' N, 10°55' E
TZ: +01.00, 4124 miles
+6 hrs 0 mins
Sat 7 May, 3:39 pm

New York, USA
40°45' N, 74°00' W
TZ: -05.00, 0 miles
0 hrs 0 mins
Sat 7 May, 9:39 am

Oymyakon, Russia
63°30' N, 142°43' E
TZ: +10.00, 4968 miles
+14 hrs 0 mins
Sat 7 May, 11:39 pm

Sochi, Russia
43°34' N, 39°46' E
TZ: +03.00, 5316 miles
+7 hrs 0 mins
Sat 7 May, 4:39 pm

Continent: Find Place
Location: Lat 40°45' N, Lon 74°00' W
Country: USA
Time Zone: (-05.00) Eastern Standard Time
DST Begins: 1st, DST Ends: 1st
Sunday: Sunday, March: November
02:00, 02:00
Store New Edit Use
New York, USA
0 hrs 0 mins, 0 miles
Sat 7 May, 9:39 am

Choose your location from a database of over 1000 from around the world. Each location can have a separate time zone and daylight saving time rule. If you can't find your own location in the database you can define up to 10 new ones, tailored to your own needs. Each location defined can also be edited and changed when necessary. The locations in the database are sorted by continent and city. The database of locations can be updated via the AD web site.

Anno Domini 2017 Professional - New York, USA

Event Editor PIM Mini RSS Planets Weather Sun Moon Options Nature Help About
Calendar Moon Phases Events Astronomy On This Day Location Sundial Clocks Convert Reports

On This Day
07 May 2016
Today ?
News TV Sport

7 May
1838: George Eastman patented his Kodak box camera.
1915: A German submarine torpedoed the liner Lusitania killing 1400 people off the Irish coast.
1945: The Germans surrendered to Generals Montgomery and Bedell Smith at Rheims.
1960: Leonid Brezhnev became head of the USSR.
1833: Johannes Brahms, German composer and pianist of Concerto No. 1 in D Minor (1857).
1901: Garry Cooper, US actor who won an Oscar for the film High Noon (1952).
1909: Edward Land, US physicist and inventor of the Polaroid camera and process (1947).
1919: Maria Eva Duarte Perón, 'Evita', legendary Argentinean political leader.

Chronicle Horoscope Weather Finance Comic Strips Birthdays

Delete Insert Quotations New Save
Quote: I have never understood the female capacity to avoid a direct answer to any question.
317/700
Author: Spock - Star Trek
Type: Film
Next ..

View historical events and birthdays of famous people for each day of the year. Edit the database of information to add your own events and birthdays. View daily quotations from a database of 400 and add your own quotations for display in the main Calendar tab.

Anno Domini 2026 Professional - Bradford, England

Event Editor Julian RSS Planets Weather Sun Moon Options Nature Help About
Calendar Moon Phases Events Astronomy On This Day Location Sundial Clocks Convert Reports

Abu Dhabi, U.A.E.
11:58 pm
Tue 6 Jan 2026
TZ: +04.00; +4 hrs 0 mins

Bradford, England
7:58 pm
Tue 6 Jan 2026
TZ: +00.00; 0 hrs 0 mins

Careggine, Italy
8:58 pm
Tue 6 Jan 2026
TZ: +01.00; +1 hrs 0 mins

Manchester, England
7:58 pm
Tue 6 Jan 2026
TZ: +00.00; 0 hrs 0 mins

Moscow, Russia
11:58 pm
Tue 6 Jan 2026
TZ: +03.00; +3 hrs 0 mins

Mumbai, India
1:28 am
Wed 7 Jan 2026
TZ: +05.30; +5 hrs 30 mins

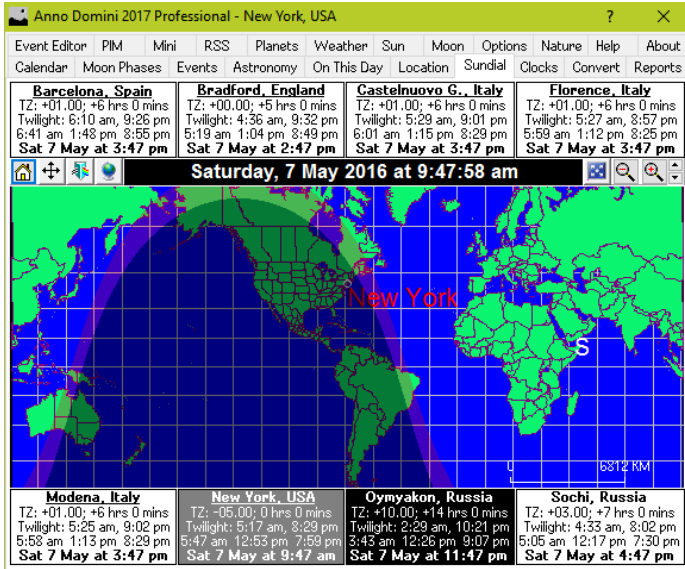
New York (NY), USA
2:58 pm
Tue 6 Jan 2026
TZ: -05.00; -5 hrs 0 mins

Sydney, Australia
6:58 am
Wed 7 Jan 2026
TZ: +10.00; +10 hrs 0 mins

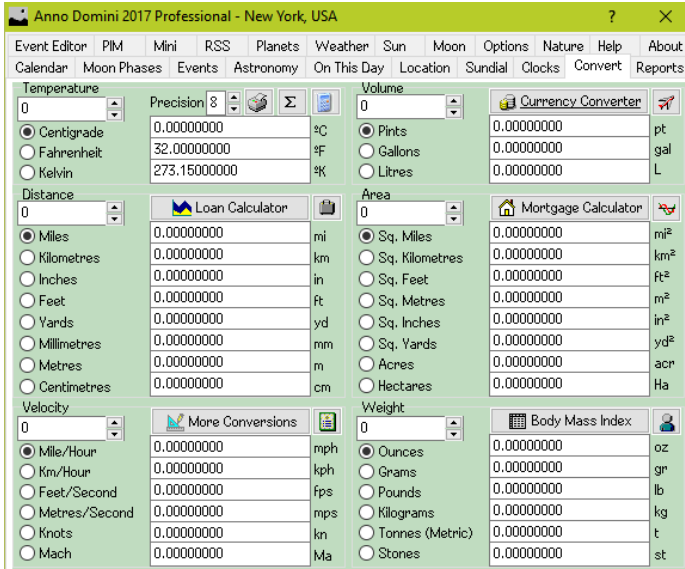
2027 Countdown: 359 days 4 hrs 1 min 34 secs

View analogue and digital clocks showing the local time in each of your 8 chosen locations. Each adjusts for Daylight Saving Time automatically and you can also view the times relative to Greenwich Mean Time.

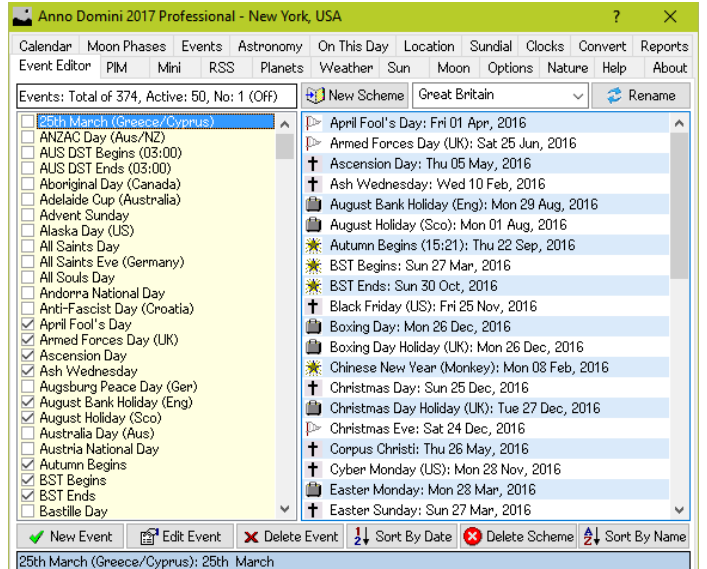
Anno Domini 2026



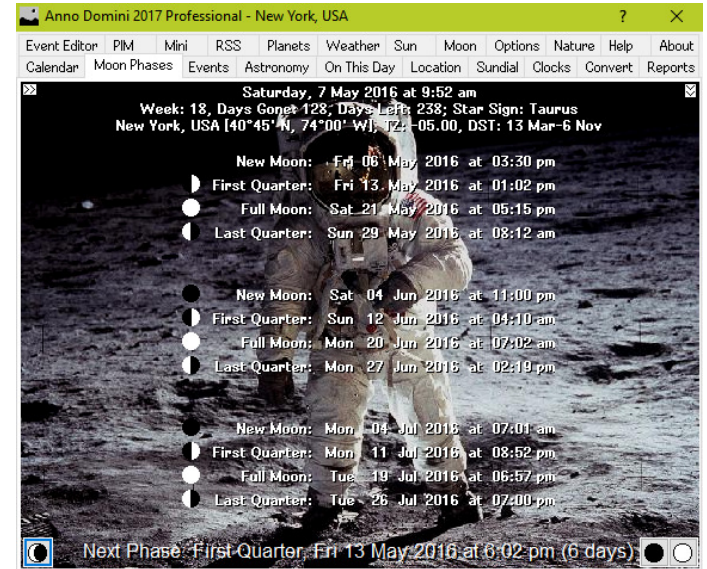
View a projection of the world highlighting areas of sunlight and darkness which is automatically updated every minute. Also view the local time of your 8 chosen locations around the world. Each location automatically adjusts for Daylight Saving Time if it is applicable for your chosen location and also notes the distance in either miles or kilometres between your home location and the other 7 chosen locations.



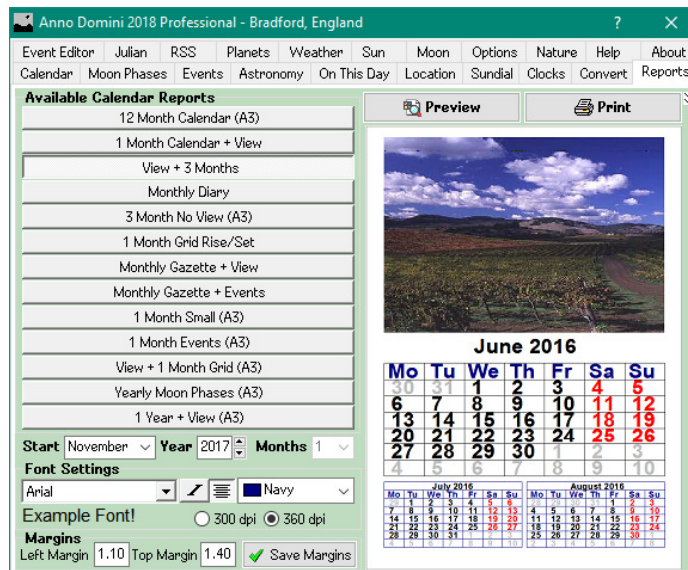
Convert between different imperial and metric measurements such as Temperature, Volume, Distance, Area, Velocity and Weight. Also, you can set the precision for each result and print your answers.



Store up to 10 schemes of 200 events each that you can fully edit and alter to your needs. Choose rules to determine which events are displayed for which years and adjust the dates depending on whether they land on a weekend or not.

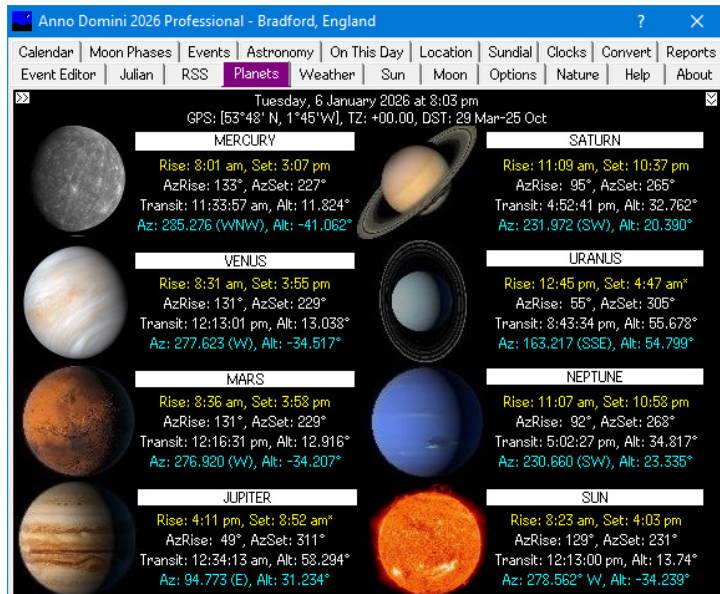


View the dates and times of the moon phases for your chosen location for the current month and the following two months. Also view the date and time of the next major moon phase.

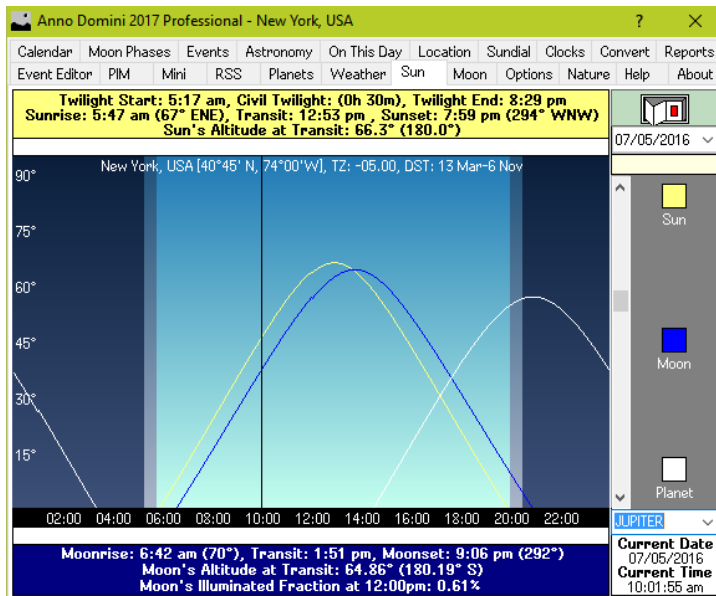


View, preview and print many reports which gather together in an organised way the information generated by Anno Domini. Print monthly and yearly calendars, planners, astronomical data and your monthly diary. The format of the reports can be altered by choosing any installed TrueType font for the reports.

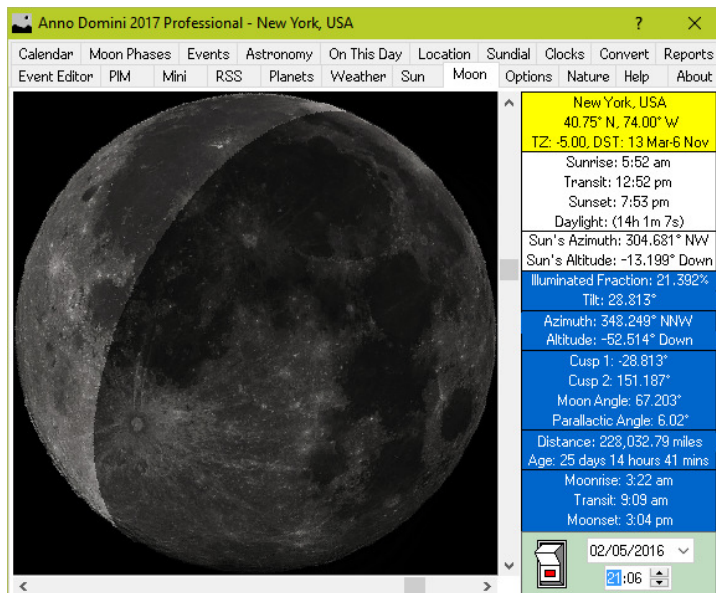
Anno Domini Professional 2026



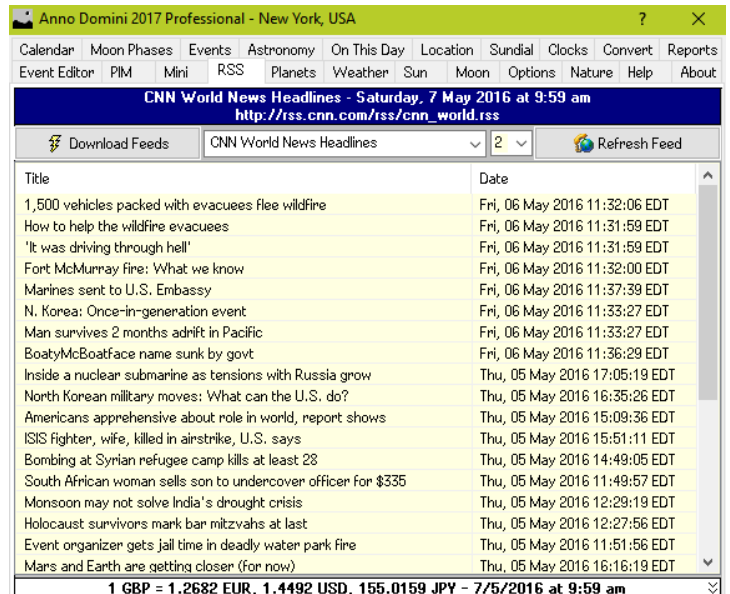
The Planets tab shows astronomical information for all 8 major Planets in the solar system including Pluto consisting of: a) Rise and set times, b) Position at rise and position at set, c) Time of transit and at what altitude, d) Current azimuth, compass position and altitude. All the information is automatically updated every minute.



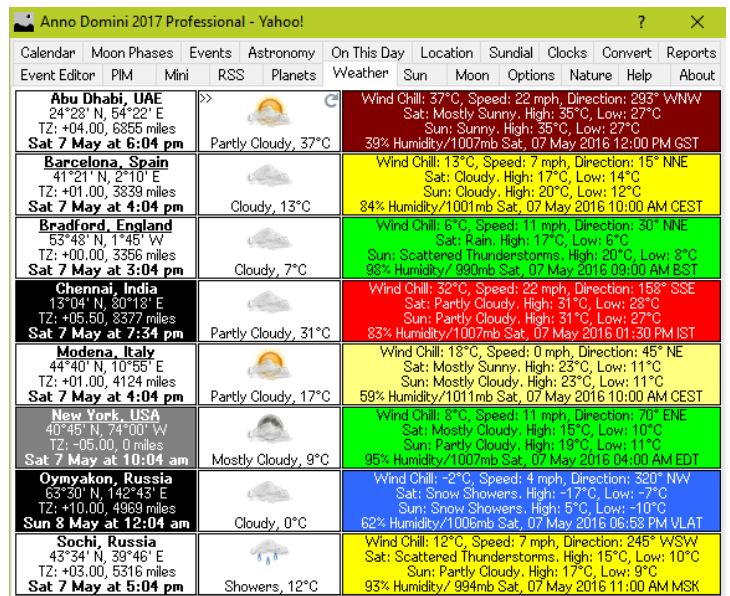
Anno Domini Professional allows you to view a comparison of the rise and set times of the Sun and the Moon and also compare their respective altitude in graph form. At any instant of the day the altitude of the Sun and the Moon can be compared to allow the user to visualize the best time for observation.



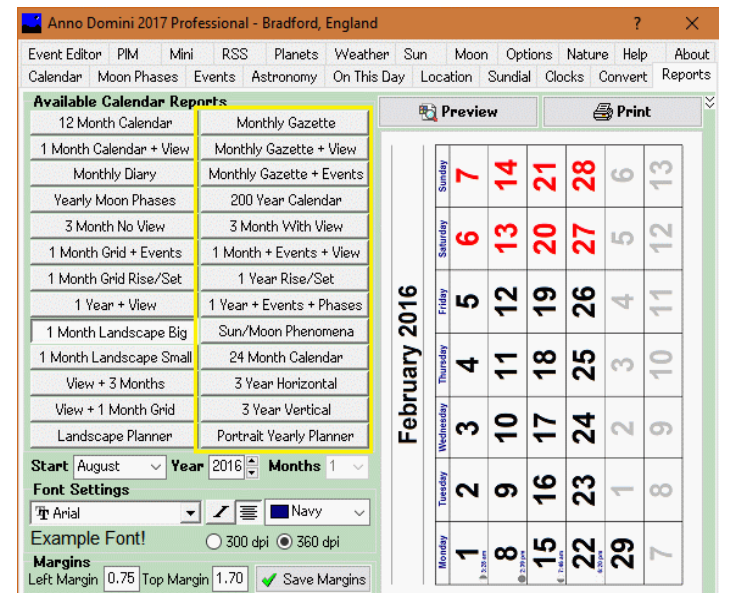
Anno Domini Professional allows you to visualize a close up of the Moon in real-time for your currently selected location on Earth. This allows you to dynamically view for any instant the exact illuminated fraction and tilt of the Moon. Any future or past instant date and time can also be selected.



The RSS News Reader downloads up to 30 separate news feeds displaying the headlines from each site provider. At any time you can click on the Download RSS Feeds to update all the RSS feeds available. Clicking on the Refresh RSS Feeds will update the currently selected feed with the latest headlines. To view any particular article, simply left-click the mouse on the headline.

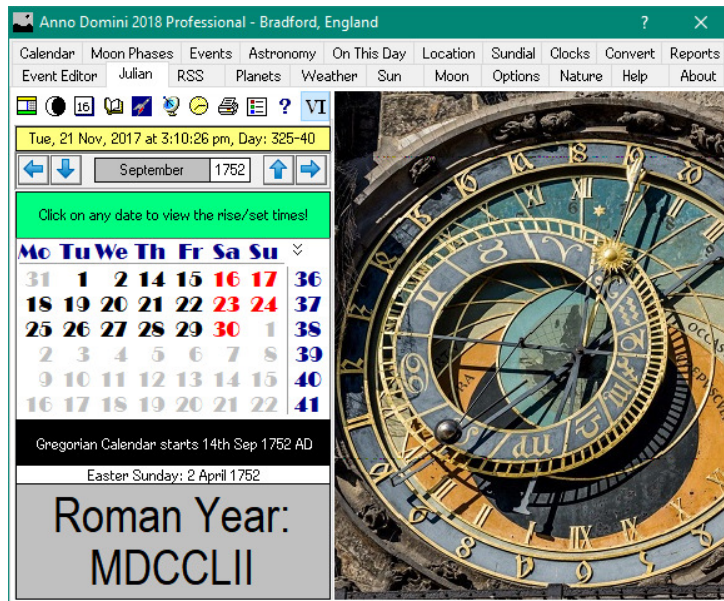


Anno Domini Professional introduces live weather forecasting. Every twenty minutes weather forecasts for your 8 chosen locations can be downloaded automatically from the Internet and viewed. Temperatures are indicated by differing colour schemes and clicking on each location provides a 5-day weather forecast.

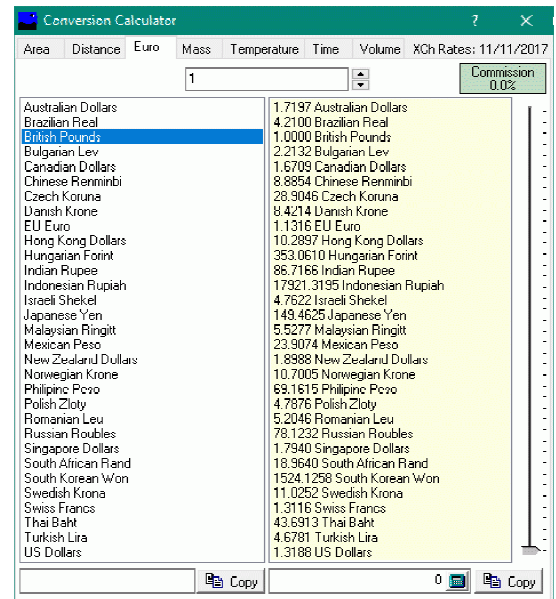


Anno Domini Professional contains an extra thirteen (13) exclusive Calendar Reports (highlighted by yellow box) accessible from the Reports tab to enhance the program.

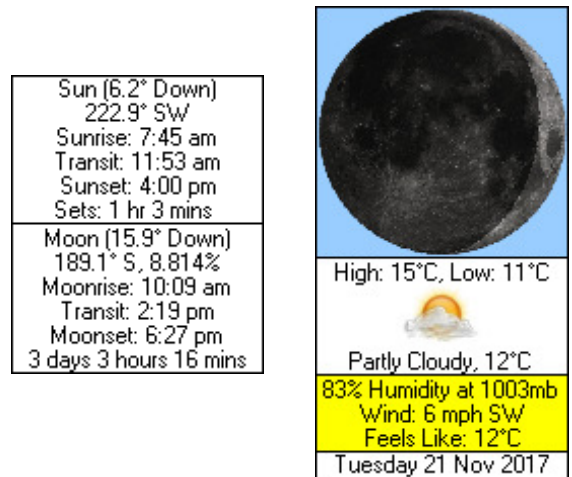
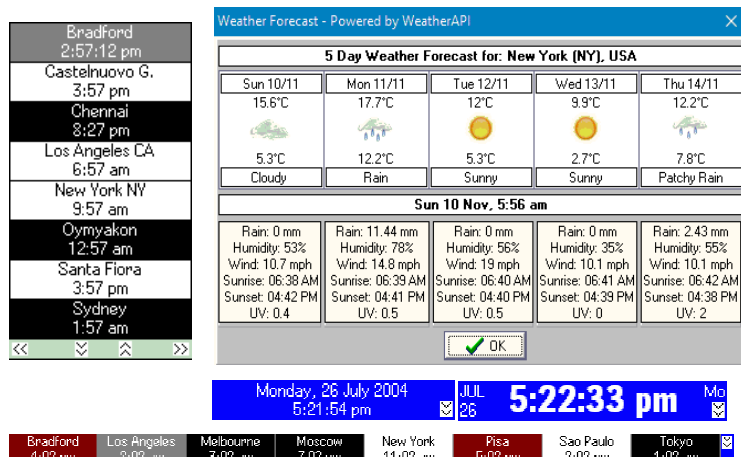
Anno Domini Professional 2026



View calendars prior to the Gregorian Calendar change. The USA and United Kingdom changed to the Gregorian Calendar system on the 14th September 1752 whereas Europe changed to the Gregorian Calendar system on the 15th October 1582.

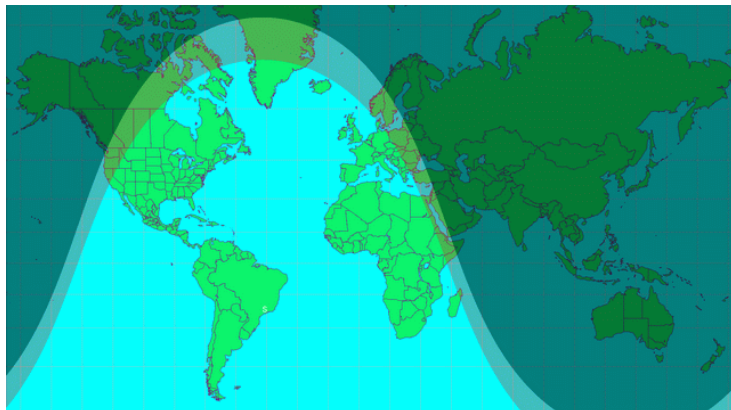


The Conversion Calculator includes real-time daily updates of up to 31 different foreign currencies with four digits of precision. All data is downloaded daily and automatically from the European Central Bank.

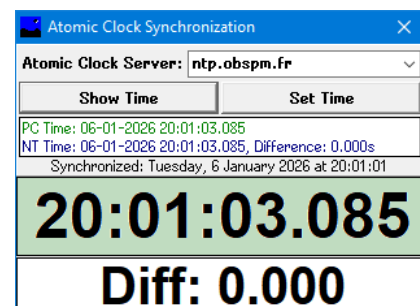


With the Desktop Clocks you can view the local time for your chosen home location and the remaining 7 locations which you have chosen. Each clock also shows the current twilight status. Users have a choice of showing the eight locations in a horizontal or vertical orientation on the desktop and the panel can be saved to a particular position on the desktop. Clicking the mouse on any of the locations will display the local weather conditions for the chosen location.

Below the desktop clocks you can view detailed astronomical data regarding the Sun and the Moon in real time. The current altitude and position of the Sun is shown along with the times of sunrise, transit and sunset along with a countdown to the next event. The current altitude and position of the Moon is shown along with the percentage of visible phase with the times of moonrise, transit and moonset. Finally the age of the Moon is shown in days, hours and minutes.



The Sundial Screen Saver shows the Sundial on your desktop after a predetermined amount of time your PC has been idle. Eight different areas of Earth are shown starting first with the whole of the Earth followed by Europe, USA, Middle East/Asia/Australasia, Russia/China and Africa/South America, The Gulf/India and Australia/New Zealand. Each map will transition after your chosen delay time. The user can choose between a 2D or 3D representation of the Earth.



Anno Domini synchronizes the PC clock at three separate time intervals during the day via an Internet Time Server to ensure your PC's clock is adjusted to match the exact atomic time accurate to thousands of a second. Professional users now have the extra benefit of access to a control panel allowing the PC clock to be adjusted at any time.

Anno Domini Feature List

FREE

STANDARD

View Gregorian calendars for years 1753 AD to 2150 AD

View Current Day of Week, Date, Time, Working Week, Days Gone, Days Left, Starsign

View times of Sunrise/Transit/Sunset, Moonrise/Transit/Moonset and Daylight Hours

Database of over 1000 locations around the world from which to choose your home and holiday locations

4 Chimes and Alarm Clocks each with distinctive alarm sounds and a message reminder

12 Images from nature via the Nature 1 Image Pack

View your home/chosen location on a 2D map or via the 3D globe representation

View a random quotation each day from a 400 quote database

Online access to News/Sports/Horoscopes/Comic Strips/TV Schedules

Event Editor to create your own recurring Anniversaries

Daily and Weekly Diary and view the previous and next months calendar

View the local time in any 8 chosen locations taking into account local Daylight Saving Time rules

View dates/times of Moon Phase for the selected month (years 1753 AD to 2150 AD)

Database of annual holidays for the UK/US/Europe/Canada/Hong Kong/Australasia

Easter Sunday, Chinese New Year and Passover calculated for years 1753 AD to 2150 AD

Automatic Atomic Clock synchronization of your PC at 10am, 3pm and 8pm local time

8 Calendar Reports

13 Calendar Reports

Print Calendar Reports for years 2018 and 2019

Print Calendar Reports for years 1753 AD to 2150 AD

Calendar statistics calculated from the Current Date

Calendar statistics calculated from a chosen date

3D Moon Phase Viewer

3D Moon Phase Viewer Showing Exact Angle of Tilt

3D View of Earth Showing Daylight/Darkness

Sundial Tab with Date/Time Picker and 10 Preset Maps

Moon Phases Tab with New/Full Moon Dates for the year

Events Tab to view 50 chosen events/anniversaries

Astronomy Tab with Lunar/Solar Eclipse Predictions

Conversion Tab (Temp/Distance/Velocity/Volume/Weight)

User-Defined Calendar Images

Quotation Editor for adding your own quotes

Taskbar Icon that visualizes dawn/dusk for your location

Analogue Clocks Tab to Compare Times Across the Globe

PLUS! PACK

Nature 2 And Nature 3 Image Packs (24 extra high resolution images)

Large-Scale Time Zone/World Map

Six extra Background Images (2 Moon Phases, 2 Events, 2 Astronomy)

3 Extra Hourly Sounds - Grandfather/Big Ben/Chime No 2 and 4 Extra Alarm Sounds - Alarm/Laser/Honk/Rooster

300 Extra Quotations giving a total of 700

Sundial Screensaver

Free upgrades to future versions of Anno Domini Standard and Anno Domini Plus!

PROFESSIONAL

RSS Internet News Reader with 78 News Feeds and News Ticker in Calendar Tab

Real-Time and On-Demand Weather Forecasts for today and five days ahead for your 8 chosen locations

Julian Calendar - View and Print Calendars from 1 AD to 1752 AD

Atomic Clock Control Panel To Synchronize PC Clock On Demand

Planets Tab showing in real-time Altitude/Azimuth Positions along with Rise/Set Times of all the Major Planets

26 Calendar Reports which can be printed for years 1 AD to 2150 AD

Lunar and Solar Eclipse reports generator for years 1 AD to 2150 AD

Currency Converter with Live Foreign Exchange Rates for 23 Different Currencies

Desktop Clocks & Desktop Weather Launcher with real-time visual of the Moon

Compare visually the Azimuth and Altitude of the Sun / Moon / Planets for your chosen location

Visualize the Illuminated Fraction and Tilt of the Moon In Real-Time for any location in the world

Track the Position of the Sun, Moon and Planets in Real-Time With Updates Every Second

Sundial Screensaver



Anno Domini 2026

**v1.10 (Build 2601), 1st January 2026, Copyright (C) Enzo Ciaffarafa 1995 – 2026
Free/Shareware Calendar, IBM PC + Microsoft Windows 11, 10, 8.1, 7, Vista, XP**

<https://www.anno-domini.net>

Anno Domini is a shareware program which means you can evaluate the program for a period of time before deciding whether you wish to continue using the product. You are free to pass copies on copies of the program to friends and colleagues providing the distribution package is not altered in any way and is in unregistered form.

You can use Anno Domini legally for a period of 28 days from the day the program was first installed on your computer system. During this time you must decide whether you wish to register to continue using the program with the same functionality as during the trial period. After the evaluation period has expired, the program will revert to Free mode where all nags to register will be removed but only a limited number of functions will be available for use. There are various online registration options available as follows:

Anno Domini Standard: £7.99 (UK), \$9.99 (US), €8.99 (EUR)

AD Standard + Plus! Pack: £9.99 (UK), \$12.99 (US), €10.99 (EUR)

Anno Domini Professional: £22.99 (UK), \$29.99 (US), €24.99 (EUR)

Plus! Pack: £4.95 (UK), \$6.95 (US), €5.95 (EUR)

Purchase of the Plus! Pack entitles users to FREE lifetime upgrades to Anno Domini Standard/Plus!

How Can I Register?

Register Online by Credit Card

You can register via the dedicated Anno Domini website by clicking on the 'Buy Online' button from the Help tab in Anno Domini or by going to the web address <http://www.anno-domini.net/Registration9us.htm> and making payment with your credit card. ***You will normally receive your registration code within 24 hours by return e-mail.*** Payment in UK Sterling or Euros is also accepted.

Shareware Philosophy!

Anno Domini has been developed over a period of fifteen years and has been continually evolving during that period of time with the help of registered users. Unlike commercial applications that you may find on the high-street, shareware is constantly updated so that you can always have the latest version of the program which can be found on the dedicated website <http://www.anno-domini.net>.

Why Should You Register?

**No nag screens or reminders while using Anno Domini
Gain access to free software updates and e-mail support to Anno Domini
Receive advance notification of updates and new releases
Help fund development of future versions of the program.**